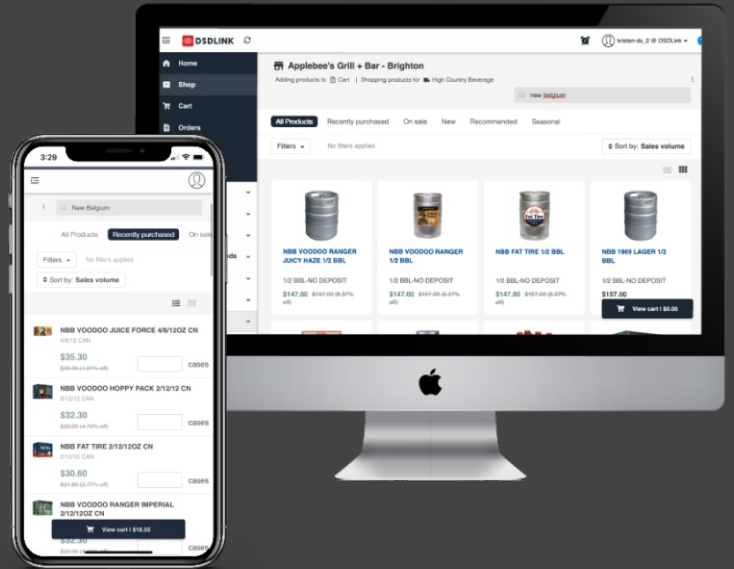


NOW AVAILABLE!

ORDER ONLINE

Place your beverage orders anywhere, at any time, on any device with DSDLink. Be informed with up-to-date pricing, inventory information, product specs, account information, and delivery notifications.



Stay organized and save time

- Manage inventory, deliveries, and rep communication
- Access account balances and invoices
- View previous purchases and inventory history
- Receive delivery and order reminder notifications

Order on your time

- Explore and order new products
- Take advantage of deals and discounts
- Use recent sales history to right-size your order
- Follow your delivery with 'Delivery Tracker'
- Easily make changes to your orders
- Record inventory
- Order for multiple accounts
- Pay online

Signing up is easy!

Sign up:

- Download DSDLink mobile from the App Store, Google Play, or dsdlink.com
- Select 'Create a new account'
- Enter your email, name, and mobile number
- Wait for an email from info@dsdlink.com and create a password

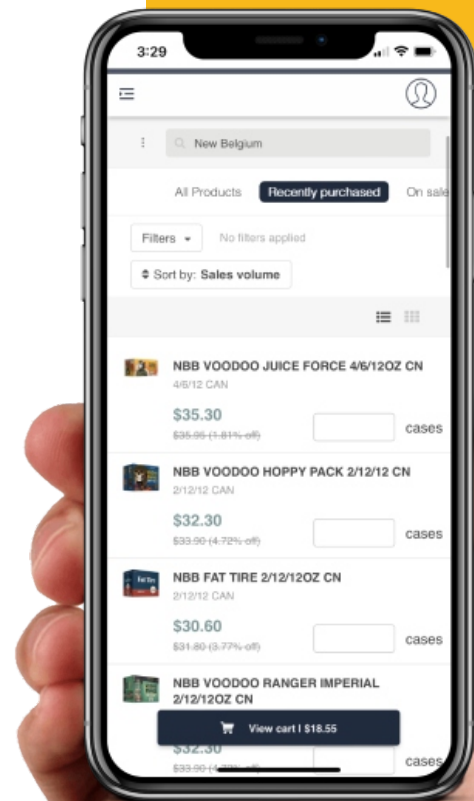
Link your business to Iowa Beverage:

- After logging in with your email/password select 'Manage business'
- Select 'Connect a new business'
- Search and select 'Iowa Beverage'
- Enter a previous invoice number and your customer ID

dsdlink 

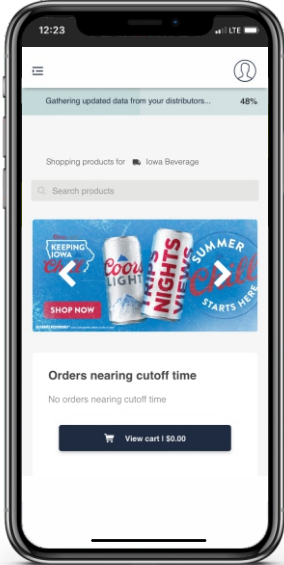
 App Store

 Google Play



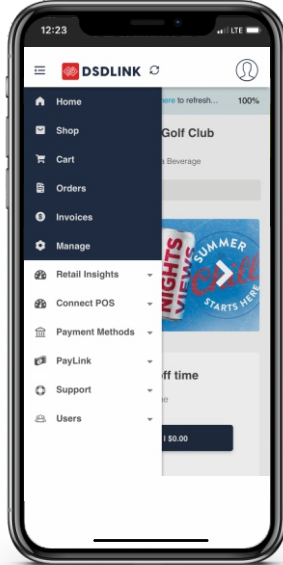
Home Screen

Login and view home screen to access new products, recommendations, and navigation bar.



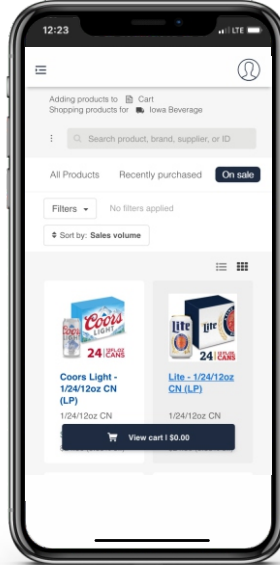
Navigation Bar

Select *Shop*, *Cart*, *Orders*, *Invoices*, or *Manage* your account settings.



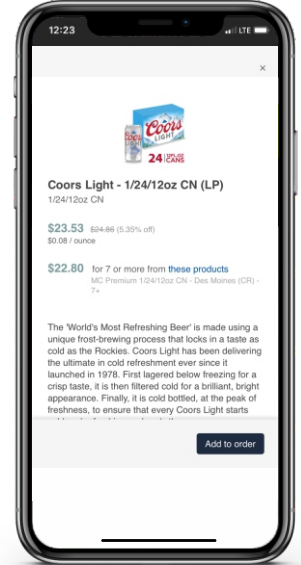
Shop

Select *Shop* in navigation bar. View all products, recently purchased products, or on sale products.



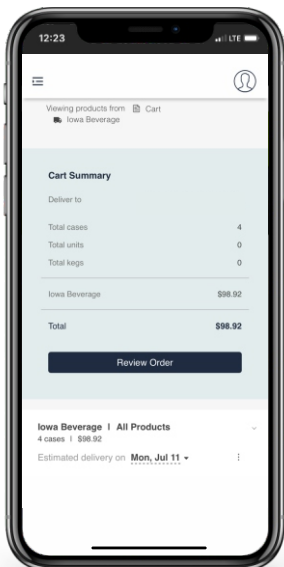
Select Product

Select product to view attributes and description. Select *Add to Order* to place item in *Cart*.



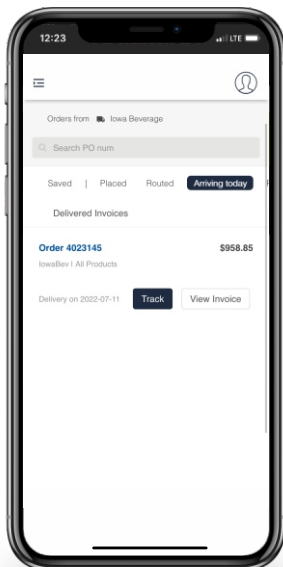
Cart

Select *Cart* in navigation bar after entering inventory and purchase quantities. Select *Review Order* after approval.



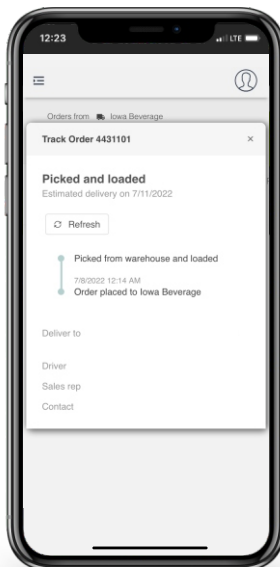
Orders

Select *Orders* in navigation bar to view pending and historical orders.



Track Order

Select *Track* to receive order status and estimated time of delivery.



Invoices

Select *Invoices* to view, download, or print past and current invoices.

